



FINSBURY PARK

City North is a brand new, award-winning development of 26,107 sq ft Grade A office space, situated above Finsbury Park Station and with an abundance of great amenities nearby.

Just 7,239 sq ft remains following successful lettings.

Already announced at City North include M&S Foodhall, Gymbox, Cineworld, Gail's, Multiple Sclerosis Society and Rosa's Thai.

Suitable for other uses including educational and medical (subject to planning).



Availability

from 2,697 sq ft to 7,239 sq ft

Level 1

Carriage House

4,542 sq ft

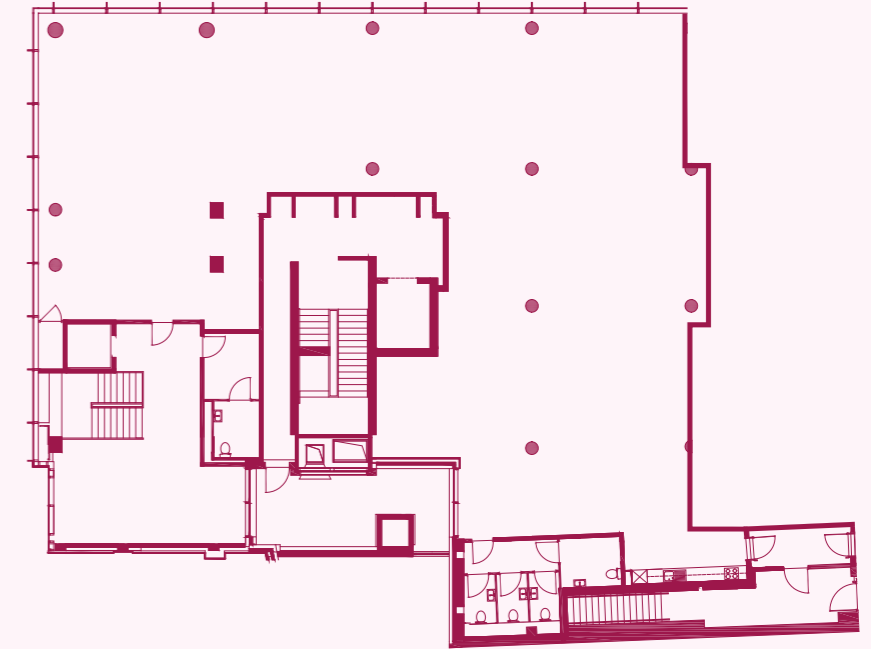
East Tower

2,697 sq ft

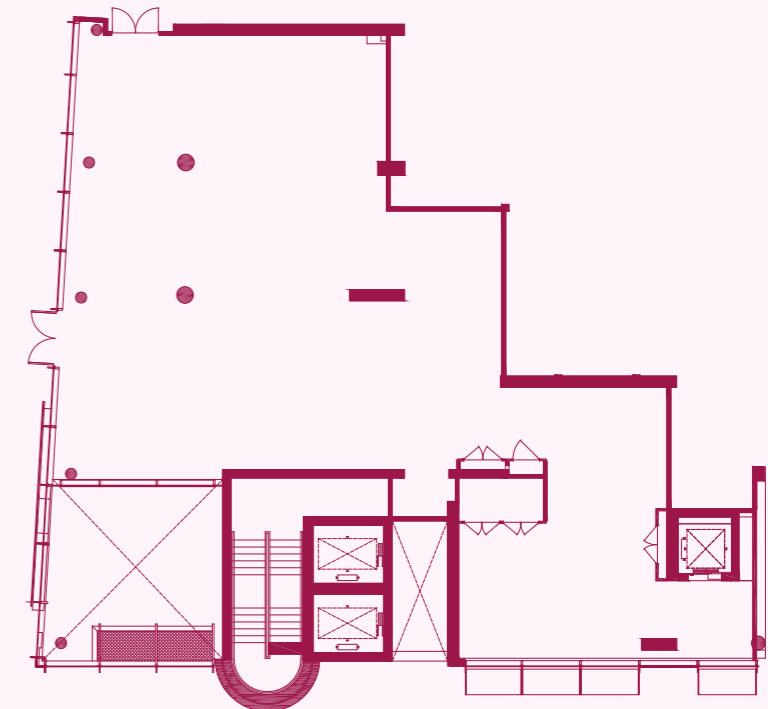
Total area

7,239 sq ft

Carriage House
4,542 sq ft

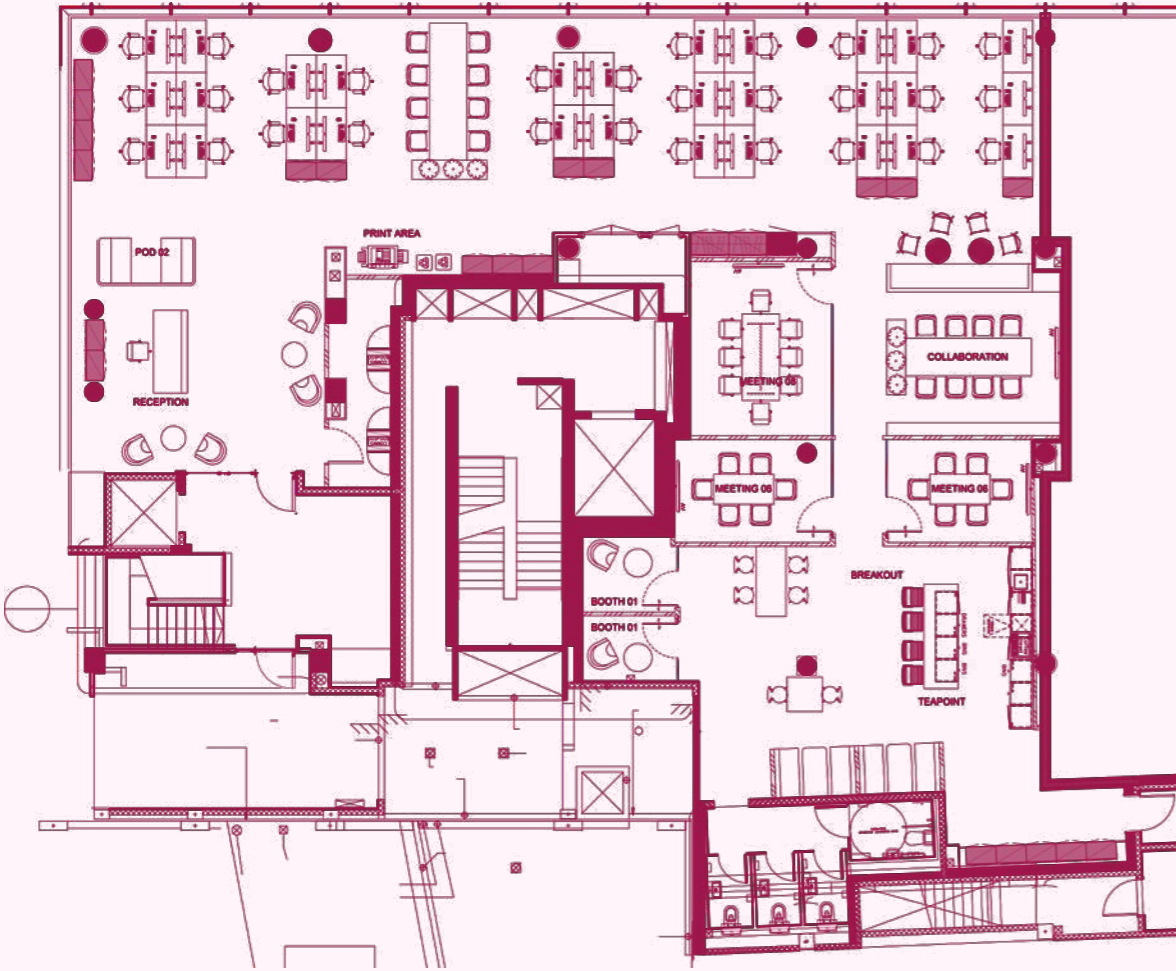


East Tower
2,697 sq ft

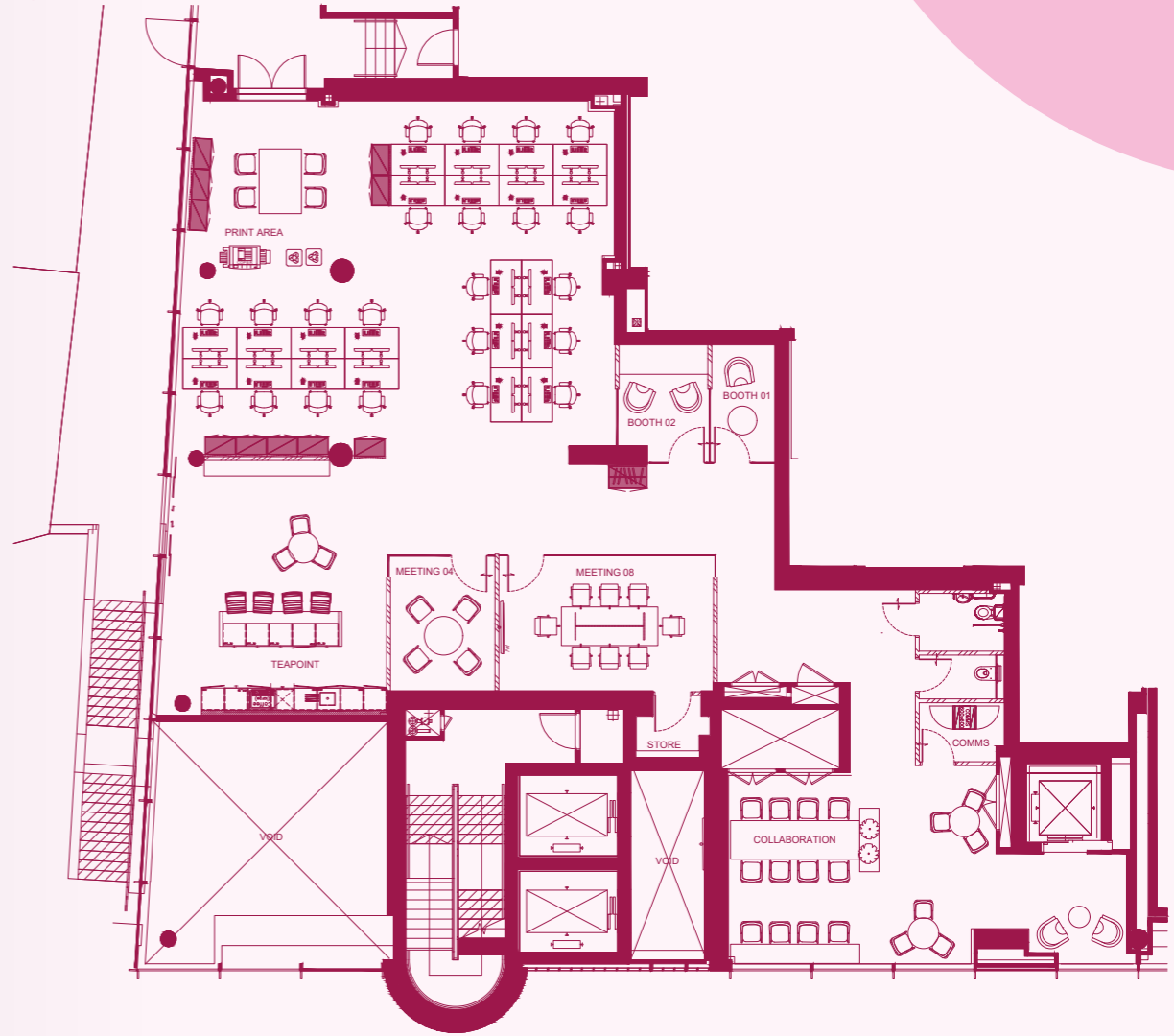


Indicative space plans

Carriage House
4,542 sq ft

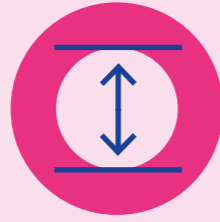


East Tower
2,697 sq ft

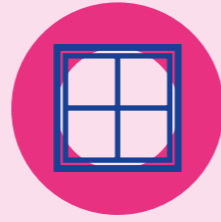


Units are currently in CAT A condition, however they can be fitted upon request.

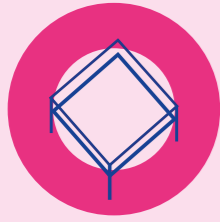
Down to specifics



3.2 metre floor to ceiling height



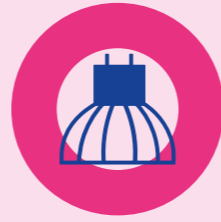
Full height glazing



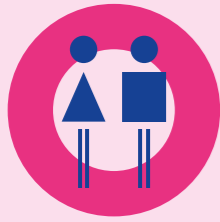
Full access raised floors



Combination of exposed services and feature mesh ceiling



Modern hanging LED lighting



Dedicated male and female WCs



Shower facilities



65 cycle parking spaces



Self-contained



Dedicated outdoor space







Fan coil air conditioning



Connectivity

New station entrance linking directly into the scheme.

<p>TOTTENHAM HALE</p>  <p>7</p>	<p>KING'S CROSS ST. PANCRAS</p>  <p>5</p>	<p>OXFORD CIRCUS</p>  <p>9</p>	<p>GREEN PARK</p>  <p>11</p>
<p>OLD STREET</p>  <p>14</p>	<p>VICTORIA</p>  <p>14</p>	<p>MOORGATE</p>  <p>15</p>	<p>LIVERPOOL STREET</p>  <p>17</p>
<p>WATERLOO</p>  <p>18</p>	<p>BANK</p>  <p>18</p>	<p>LONDON BRIDGE</p>  <p>19</p>	<p>STANSTED AIRPORT</p>  <p>45</p>



**For further information or to arrange an inspection
please contact our agents:**



Simon Tann

simon.tann@levyrealestate.co.uk

07748 180 198

Stephen Fixman

stephen@fortygroup.co.uk

07961 411 284

Samantha Jones

samantha.jones@levyrealestate.co.uk

07800 539 387

Megan Carr

megan.carr@levyrealestate.co.uk

07896 899 798

DISCLAIMER: Misrepresentations Act 1967: (i) Although maximum care has been taken to ensure the accuracy of the information contained within this report, such information is subject to change and confirmation. (ii) No liability will be accepted by Levy for any loss arising from information contained within this report as it may have been provided by a third party source and will require verification. (iii) This report provides a general outline only for the guidance of prospective purchasers and does not constitute the whole or any part of an offer or contract. (iv) No employee of Levy has the authority to make or give any representation or warranty or enter into any contract whatever in relation to the property. (v) Rents and prices stated within this report may be subject to VAT. June 2022.

Designed and produced by Graphicks | 020 3435 6952 | www.graphicks.co.uk